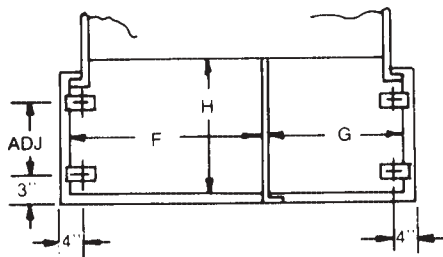


Compartmental Padmounted Distribution Transformer

LIVE FRONT RADIAL FEED WITH BAY-O-NET FUSING

STANDARD ACCESSORIES

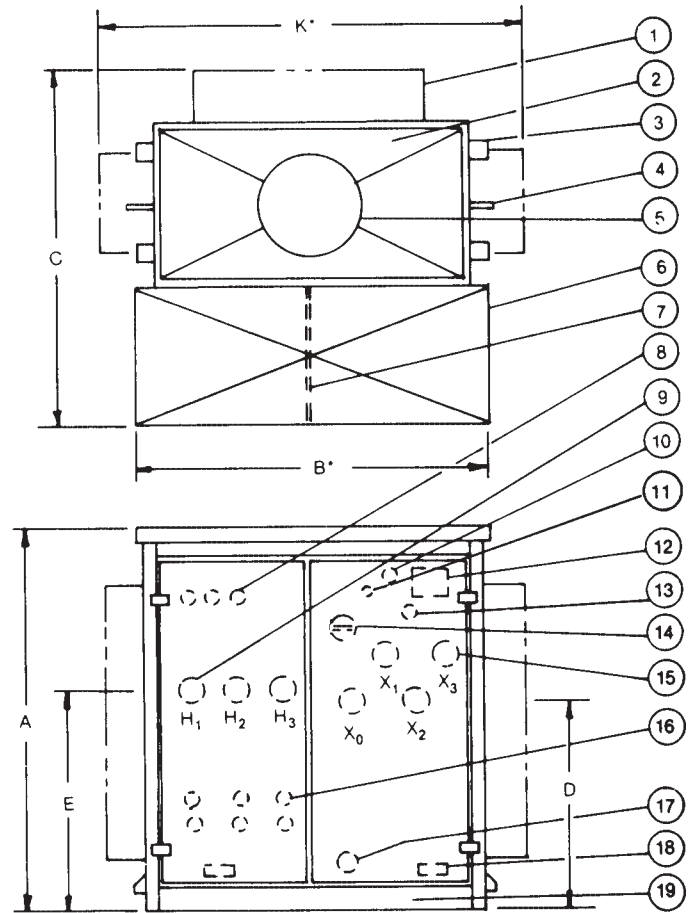
1. Cooling panels
2. Tank with welded-on covers
3. Lifting lugs
4. Jack Lugs
5. Handhole
6. Compartment
7. Steel divider
8. Bay-O-Net fuses
9. H.V. bushings
10. 1" fill plug and filter press connection
11. Pressure relief valve
12. Corrosion resistant nameplate and connection diagram
13. Liquid level plug
14. De-energized tapchanger
15. L.V. bushings
16. Arrester – mounting provisions
17. 1" drain plug – supplied with drain valve and sampling device 750 KVA and above
18. Ground pad per ANSI standards
19. Removable front sill



CABLE ENTRANCE DETAIL

NOTE: ALL DIMENSIONS ARE FOR 95 KV BIL TRANSFORMERS.

* DIMENSIONS ARE APPROXIMATE – NOT TO BE USE FOR CONSTRUCTION



KVA	A	B	C	D	E	F	G	H	K	GAL. LIQUID	APPROX. TOTAL WEIGHT WITH OIL
75	49	49 ¹ / ₄	38	25	24	29	17	16 ¹ / ₂	53	112	2300
112.5	49	49 ¹ / ₄	48	25	24	29	17	16 ¹ / ₂	53	115	2350
150	49	49 ¹ / ₄	50	25	24	29	17	16 ¹ / ₂	53	112	2350
225	49	53 ¹ / ₄	59	25	24	29	21	18 ¹ / ₂	57	168	3300
300	49	53 ¹ / ₄	63	25	24	29	21	18 ¹ / ₂	57	163	3500
500	49	53 ¹ / ₄	68	25	24	29	21	18 ¹ / ₂	57	149	4000
750	58	57	69	36	36	29 ¹ / ₂	24	18 ¹ / ₂	60	263	6340
1000	58	57	75	36	36	29 ¹ / ₂	24	18 ¹ / ₂	60	258	7010
1500	61	64 ¹ / ₂	81	36	36	37	24	24 ¹ / ₂	69	335	8500
2000	75	64 ¹ / ₂	91	48	48	37	24	24 ¹ / ₂	69	418	11845
2500	75	64 ¹ / ₂	91	48	48	37	24	24 ¹ / ₂	69	420	12580

For dimensions above 2500 KVA, contact factory.

