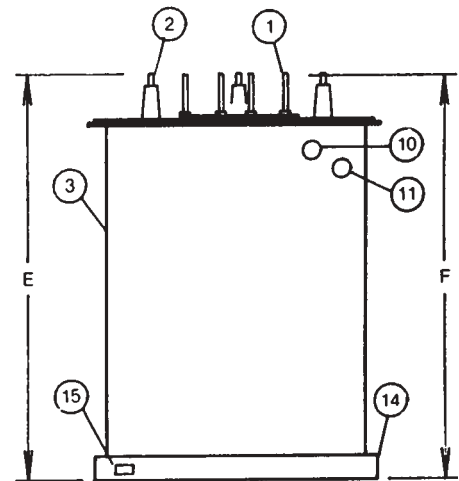
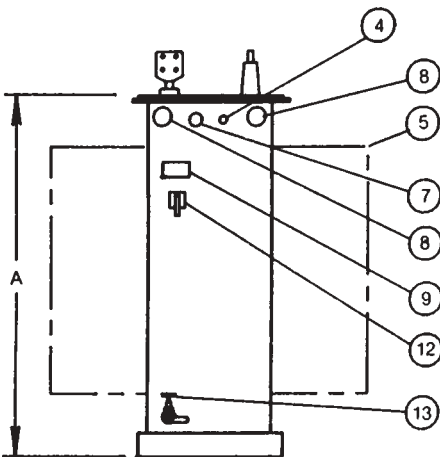
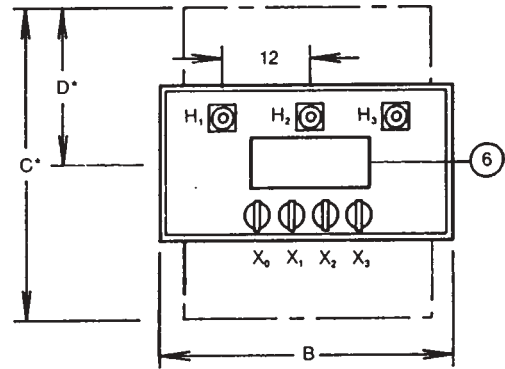


# Three Phase Distribution Substation Transformers

## STANDARD FEATURES

1. L.V. bushings—spade
2. H.V. bushings—eyebolt
3. Tank with welded-on cover
4. 1" fill plug and filter press connection
5. Cooling panels
6. Handhole
7. Pressure vacuum gauge
8. Lifting lugs
9. Corrosion resistant nameplate and connection diagram
10. Liquid level gauge
11. Dial-type thermometer
12. De-energized tapchanger
13. 1" drain plug—supplied with drain valve and sampling device 750 KVA and above
14. Base suitable for jacking, skidding, or rolling
15. NEMA ground pad



NOTE: ALL DIMENSIONS ARE FOR 95 KV BIL TRANSFORMERS.  
 \* DIMENSIONS ARE APPROXIMATE — NOT TO BE USED FOR CONSTRUCTION

| KVA   | BASE DIMS. |    | 65° RISE |     |    |    | GAL. LIQUID | TOTAL WEIGHT | 55/65° RISE |       |    |     | GAL. OIL | TOTAL WEIGHT OIL |    |    |     |       |
|-------|------------|----|----------|-----|----|----|-------------|--------------|-------------|-------|----|-----|----------|------------------|----|----|-----|-------|
|       | WD         | LG | A        | B   | C  | D  |             |              | E           | F     | A  | B   |          |                  | C  | D  | E   | F     |
| 112.5 | 22         | 42 | 42       | 49½ | 33 | 21 | 52          | 49           | 86          | 2000  | 42 | 49½ | 38       | 26               | 52 | 49 | 89  | 2100  |
| 150   | 22         | 44 | 42       | 51½ | 35 | 23 | 52          | 49           | 89          | 2100  | 42 | 51½ | 35       | 23               | 52 | 49 | 92  | 2200  |
| 225   | 24         | 46 | 42       | 53½ | 41 | 28 | 52          | 49           | 105         | 2710  | 42 | 53½ | 45       | 31               | 52 | 49 | 106 | 2750  |
| 300   | 24         | 46 | 42       | 53½ | 45 | 31 | 52          | 49           | 103         | 3000  | 42 | 53½ | 45       | 31               | 52 | 49 | 109 | 3100  |
| 500   | 24         | 52 | 52       | 59½ | 45 | 31 | 62          | 59           | 161         | 3800  | 52 | 59½ | 45       | 31               | 62 | 59 | 168 | 3970  |
| 750   | 29         | 53 | 52       | 60½ | 50 | 34 | 62          | 59           | 201         | 5950  | 52 | 60½ | 73       | 34               | 62 | 59 | 210 | 6170  |
| 1000  | 29         | 56 | 58       | 63½ | 55 | 40 | 68          | 67           | 253         | 6950  | 58 | 63½ | 78       | 39               | 68 | 67 | 264 | 7200  |
| 1500  | 29         | 59 | 70       | 66½ | 55 | 40 | 81          | 79           | 320         | 8800  | 70 | 66½ | 78       | 39               | 81 | 79 | 350 | 9550  |
| 2000  | 32         | 59 | 70       | 66½ | 76 | 41 | 81          | 79           | 375         | 10250 | 72 | 66½ | 100      | 50               | 83 | 81 | 407 | 10650 |
| 2500  | 32         | 59 | 70       | 66½ | 82 | 41 | 81          | 79           | 355         | 13730 | 72 | 66½ | 108      | 54               | 83 | 82 | 379 | 14250 |

